



Quincy Public Schools K-5 Learning Community Plan

Transitioning the District to Five Kindergarten
through Fifth Grade Learning Communities

1416 Maine Street
Quincy, IL 62305

p. 217-228-7158
f. 217-228-7162

murphyjo@qps.org
www.qps.org

Executive Summary

With the passage of the 2014 Building Bond Referendum, the Quincy Public Schools have been entrusted with the opportunity to transform the educational landscape of the Quincy community. This August, the first major project of the referendum, the additions and renovations to Quincy High School, will allow us to move to a traditional high school model for grades nine through twelve. The move to a 9-12 High School provides us with the opportunity to move sixth grade to Quincy Junior High School and provide a middle school model for grades 6-8. The next major step in our building program will be the opening of the first of our five new K-5 Elementary Schools on the Monroe Site in 2017. This also brings us to our next major transition point, moving to a K-5 elementary school model and the implementation process needed to create Kindergarten through Fifth Grade Learning Communities.

The process to create these K-5 Learning Communities is not just about constructing buildings and moving students and staff. It is about building a neighborhood of students, teachers, parents, support staff, and the community, where students can grow academically and emotionally in a safe and healthy environment. In order to accomplish this, we have identified four major tasks in this implementation process. They are:

- Construct and equip 5 K-5 Elementary Schools
- Develop Attendance Boundaries that provides equal diversity in all schools as much as possible
- Develop a plan to staff the new buildings to meet the needs of the students
- Develop a plan to move students and staff into the new Learning Communities

This report will provide a basic outline for accomplishing these tasks, along with timelines and milestones for each area. Several of the tasks will require extensive planning and participation from various stakeholders as we move toward implementation. The plan we are laying out can be adjusted as circumstances permit, but the ultimate goal is to have things in place for the start of the 2017-2018 school year.

Construct and Equip 5 K-5 Elementary Schools

This task is in full swing with the construction of the New School on the Monroe Site and the school at the ADM site currently out for bid. The original construction schedule called for opening a new elementary school a year, with the last school opening in the Fall of 2021. We are proposing a new schedule that would have two schools open each year after the Monroe Site building, with the final two opening in the Fall of 2019.

Attendance Boundaries

The Board of Education has given the charge to form a steering committee to look at establishing new attendance boundaries for our elementary schools. The Board has directed that the new boundaries provide, as much as possible, for equal diversity and opportunity. This committee will be facilitated by Joel Murphy, Business Manager, and is set to start in September. The District is seeking members to provide their unique perspective on the impact of forming new boundaries. It is the goal of the committee to have a recommendation to the Board of Education before the end of December.

Building Staffing Plan

A critical component of staffing these new buildings is the naming of the principals for these facilities. It is expected that the announcement of the candidates for these positions will be announced at the July 2016 Board of Education Meeting.

These five individuals will be working with Carol Frericks and Julie Stratman to develop a process to assign staff to best meet the needs of our students. They are hoping to have the process in place so that our teaching staff will know their assignment by the end of December and that support staff would know before the end of the school year.

Moving to Learning Communities

The concept of a Learning Community is to include all aspects of students' lives to make them successful. Or as our Mission Statement states it, "Educate students and teachers to achieve personal excellence." It also involves

developing partnerships with parents and the community at large to create the “culture of excellence” called for in the District’s Vision Statement.

We feel that in order to accomplish this, we need to move to the five communities as soon as possible. We are proposing to move all students and staff to their new Learning Communities with the opening of the New Elementary School at the Monroe Site. As part of this proposal, we would assign some of our current facilities to serve a transitional role to house the Learning Community for a year or two, until their new school is ready.

We feel that this will give all those involved a “jump start” on developing the culture of their new school. They will have the opportunity to work together to plan for the physical move and other activities it will take to build this new community.

Mission, Vision and Strategies Statement

Mission

Educate students and teachers to achieve personal excellence.

Vision

The Quincy Public School District is committed to creating a culture of excellence in education for college and career readiness by

- Engaging students to achieve personal excellence;
- Building professional knowledge and excellent teaching practices through collaboration;
- Utilizing curriculum aligned to the state standards;
- Establishing high expectations and improving student growth; and
- Developing active partnerships with parents and the community.

Guiding Principles and Goals

1. Construct and equip 5 K-5 Elementary Schools.
 - a. New School at the Monroe Site – Open Fall 2017
 - b. New Schools at the ADM Site and the North 12th Street Site – Open Fall of 2018
 - c. Acquire Southwest Quadrant Site
 - d. New Schools at Baldwin Site and the Southwest Site by the Fall of 2019
2. Develop Attendance Boundaries that provides equal diversity in all schools as much as possible
3. Develop a plan to staff the new buildings to meet the needs of the students
4. Develop a plan to move students and staff into the new Learning Communities

Building Staffing Plan

Led by Carol Frericks, along with Julie Stratman and the five new school principals, we will develop a process to assign staff to the new elementary schools. The process will place staff to best meet the needs of our students in the District. The location and grade preferences of the staff will also be taken into account in developing the staffing plans. There will also be a process developed for teachers and staff to appeal their assignment and apply for an alternate assignment. The goal is to inform teaching staff of their assignment for the 2017–2018 school by December 2016. The goal for educational support staff is to know their assignments before the end of the school year.

At the beginning of the 2017-2018 school year, teachers and support staff will begin the year as part of their new Learning Community. This will mean that almost all of our elementary staff will be moving to new locations for the 2017-2018 school year. Most of the staff will be located at schools serving as “Transitional” buildings until the new schools are completed. Some will be in these temporary locations for one year and the others will be there for two years.

Timeline

September 2016 – November 2016 – Develop building staffing needs and develop process to assign staff to meet those needs.

November 2106 - December 2016 – Begin process of informing teaching staff of their new assignments.

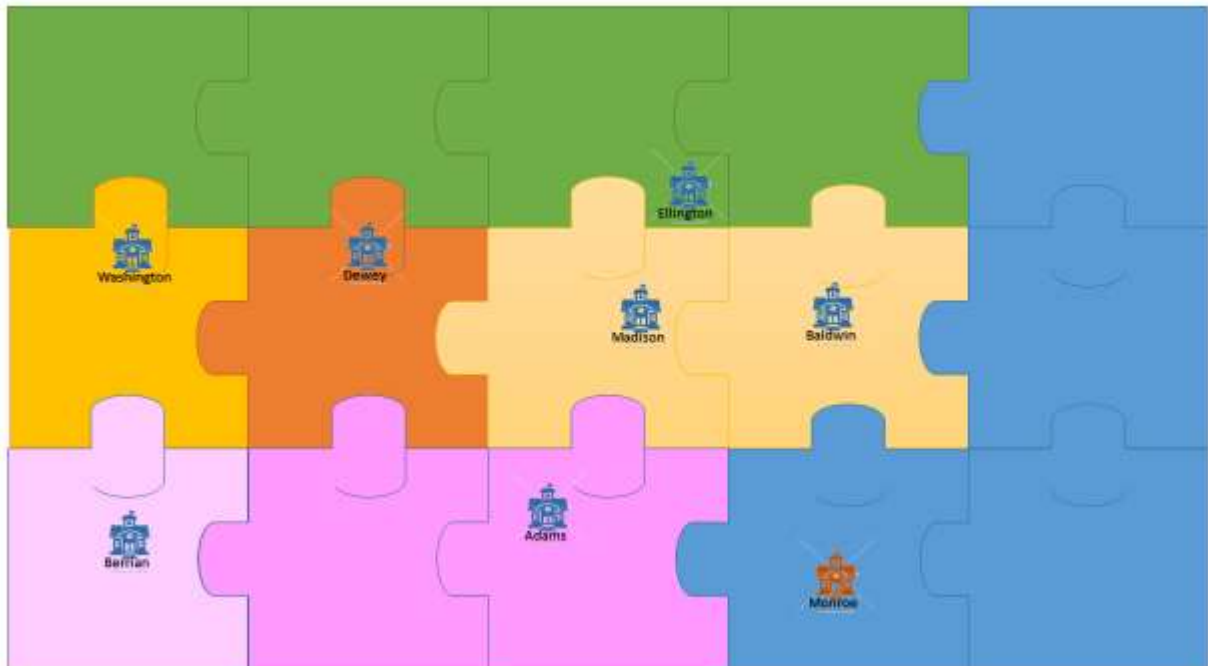
February 2017 – April 2017 – Begin process of informing support staff of their new assignments.

Moving to Learning Communities

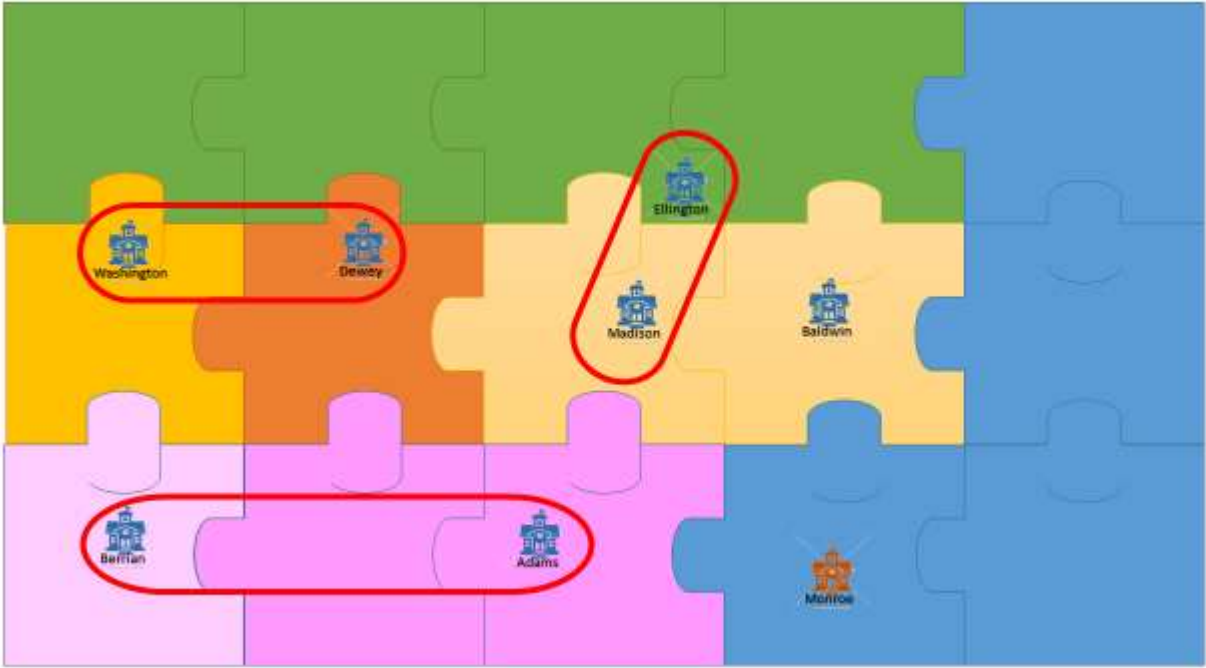
With a change in the boundaries, all students will be moving to a school that will have a different make up than the one they currently attend. These students come from strong Learning Communities of their existing schools, but we need to integrate the strength of what we have into our new alignment. The best way we feel that we can accomplish this is to move to the five communities at the same time as we open up the new School at the Monroe site.

To understand how we are going to accomplish this, let’s review what our current makeup looks like at the elementary level. For the 2016-2017 school

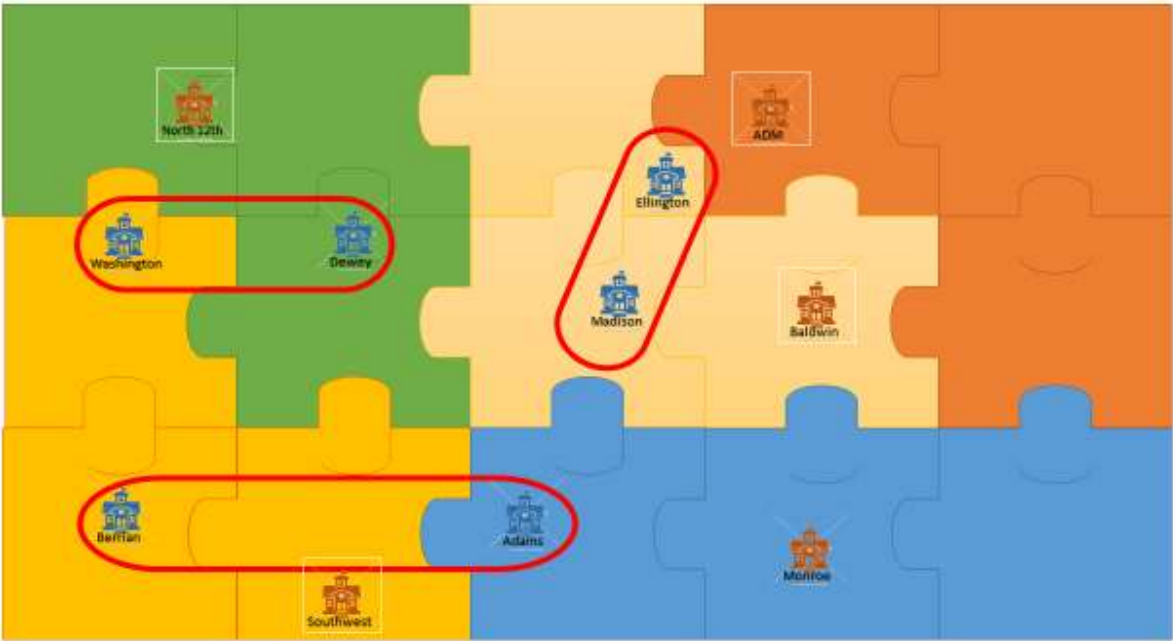
year, we will be operating seven K-3 buildings, along with the 4th and 5th graders at Baldwin. With the exception of 6th grade moving to the Jr. High, our elementary schools will operate as they have in the past. There are no boundary changes planned and no staffing changes happening. The graphic below shows a representation of District and its current elementary boundaries.



For the 2017-2018, the only new school opening will be the one at the Monroe site. So in order to have four other K-5 schools, we are proposing the creation of four Transitional Schools. A Transitional School would combine two of our existing school buildings to serve as one of the new school communities. In the case of Baldwin, it would be a transitional school in itself. Under this plan, Washington and Dewey would become the new North 12th Street Learning Community, Berrian and Adams would become the Southwest Community, Baldwin would become the new ADM Community, and Madison and Ellington would become the new Baldwin Community. Some may be wondering why Baldwin is serving as the Transitional School for ADM, basically it allows us to get into Baldwin sooner, giving us that 24-month construction schedule. There is more than enough classroom capacity in the combined facilities to operate as a K-5 building.



Teachers and support staff will begin the new school year in their new Learning Community. Almost all of our elementary staff will be moving to new locations. All students and their families would be assigned to their new school community and be able to start developing the culture for their new community.



Timeline

Under the plan, the Transitional School for the ADM site, (Baldwin) and the North 12 Street site, (Washington and Dewey), would be operated for the 2017-2018 school year. The Transitional School for the Baldwin site, (Madison and Ellington), and the Southwest site, (Berrian and Adams), would be operated until the end of the 2018-2019 school year. The graphic below shows the construction schedule and the Transitional School Schedule

Project Name	Start	End	Months	2014 - 2015				2015 - 2016				2016 - 2017				2017 - 2018				2018 - 2019				2019 - 2020																
				J	A	S	O	N	D	J	F	M	A	M	J	J	A	S	O	N	D	J	F	M	A	M	J	J	A	S	O	N	D	J	F	M	A	M	J	
School Construction Schedule																																								
Transitional Elem School @ Baldwin																																								
Relocate from Existing Facilities	May '17	Aug '17	8																																					
Operate as School	Aug '18	May '18	10																																					
Relocate to New Facility	May '19	Aug '18	3																																					
Transitional Elem School @ Washington/Dewey																																								
Relocate from Existing Facilities	May '17	Aug '17	4																																					
Operate as School	Aug '18	May '18	10																																					
Relocate to New Facility	May '19	Aug '18	4																																					
Transitional Elem School @ Adams/Berrian																																								
Relocate from Existing Facilities	May '17	Aug '17	4																																					
Operate as School	Aug '18	May '19	22																																					
Relocate to New Facility	May '19	Aug '19	4																																					
Transitional Elem School @ Madison/Ellington																																								
Relocate from Existing Facilities	May '17	Aug '17	4																																					
Operate as School	Aug '18	May '19	22																																					
Relocate to New Facility	May '19	Aug '19	4																																					

Project Name	Start	End	Months	2014 - 2015				2015 - 2016				2016 - 2017				2017 - 2018				2018 - 2019				2019 - 2020																
				J	A	S	O	N	D	J	F	M	A	M	J	J	A	S	O	N	D	J	F	M	A	M	J	J	A	S	O	N	D	J	F	M	A	M	J	
School Construction Schedule																																								
Quincy High School - Addition and Renovations																																								
Final Design & Constr Docs																																								
Construction																																								
Building Commissioning & Move-In																																								
New Elementary School at Monroe Site																																								
Final Design & Constr Docs	Dec '14	Aug '15	8																																					
Construction	Sep '15	Aug '17	25																																					
Building Commissioning & Move-In	Jun '17	Aug '17	3																																					
New Elementary School @ ADM																																								
Final Design & Constr Docs	Dec '15	Aug '16	8																																					
Construction	Sep '16	Aug '18	24																																					
Building Commissioning & Move-In	Jun '18	Aug '18	3																																					
New Elementary School @ N 12th St																																								
Final Design & Constr Docs	Jul '16	Feb '17	8																																					
Construction	Mar '17	Aug '18	18																																					
Building Commissioning & Move-In	Jun '18	Aug '18	3																																					
New Elementary School - SW																																								
Final Design & Constr Docs	Jul '17	Feb '18	8																																					
Construction	Mar '18	Aug '19	24																																					
Building Commissioning & Move-In	Jun '19	Aug '19	3																																					
New Elementary School at Baldwin Site																																								
Final Design & Constr Docs	Dec '16	Aug '17	8																																					
Construction	Sep '17	Aug '19	18																																					
Building Commissioning & Move-In	Jun '19	Aug '19	3																																					
Transitional Elem School @ Baldwin																																								
Relocate from Existing Facilities	May '17	Aug '17	8																																					
Operate as School	Aug '18	May '18	10																																					
Relocate to New Facility	May '19	Aug '18	3																																					
Transitional Elem School @ Washington/Dewey																																								
Relocate from Existing Facilities	May '17	Aug '17	4																																					
Operate as School	Aug '18	May '18	10																																					
Relocate to New Facility	May '19	Aug '18	4																																					
Transitional Elem School @ Adams/Berrian																																								
Relocate from Existing Facilities	May '17	Aug '17	4																																					
Operate as School	Aug '18	May '19	22																																					
Relocate to New Facility	May '19	Aug '19	4																																					
Transitional Elem School @ Madison/Ellington																																								
Relocate from Existing Facilities	May '17	Aug '17	4																																					
Operate as School	Aug '18	May '19	22																																					
Relocate to New Facility	May '19	Aug '19	4																																					